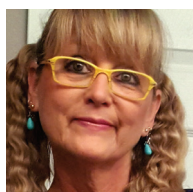


25 PREVIOUS EVALS | 17 YEARS EXPERIENCE

They feel luxurious to wear while still feeling thin enough for tactile sensitivity.

Sherry Morrissey, RDH  
Grand Forks, ND



20 PREVIOUS EVALS | 29 YEARS EXPERIENCE

I absolutely, unequivocally love this glove!

Pamela Emard, RDH  
Havre, MT



15 PREVIOUS EVALS | 13 YEARS EXPERIENCE

They fit wonderfully and I have not had any breakage issues so far.

Malee Wong, RDH  
Castle Rock, CO

DASH MEDICAL

# True Comfort blu

4.4



With new chloroprene polymer technology, these durable exam gloves offer clinicians improved grip, increased touch sensitivity, and unparalleled comfort

Although exam gloves may not be the most glamorous item in a dental professional's armamentarium, wearing an appropriate glove can play a significant role in a clinician's comfort and performance. Since gloves are worn for several hours a day and changed frequently, clinicians need a durable glove that goes on quickly, fits comfortably, and allows them to grip slippery instruments without losing tactile sensation.

DASH Medical invites clinicians to experience a new level of comfort and performance with its True Comfort blu chloroprene exam gloves. Featuring a new breakthrough in chloroprene polymer technology, True Comfort blu gloves provide practitioners with silky smooth comfort, great tactile sensitivity, and a textured grip—without sacrificing durability.

While searching for a new exam glove, Dr. Nora Donatelli recently tried the True Comfort blu gloves in her dental practice, and they passed the test with flying colors. In fact, wearing the True Comfort blu gloves made her realize the poor quality of the 2 brands she had previously been wearing.

"I didn't realize that having gloves that don't grip well cause extra stress on my hands," she told DPS. "The better grip and great tactile sensation [of the True Comfort blu gloves] allow me to grip instruments securely and reduces my hand strain." After purposely wearing the True Comfort blu gloves in one operatory and other gloves in another operatory, she concluded, "The difference was glaring."

### Comfort & Fit

Made of chloroprene and free of powder and latex, True Comfort blu gloves are designed with silky-smooth comfort that feels like a second skin. "I liked the silky texture. They feel luxurious to wear while still feeling thin enough for tactile sensitivity," noted Sherry Morrissey, RDH, who also praised the



glove's blue color.

"I liked that the gloves were soft and did not make my hands sweat," reported hygienist Lydia Pope, and Dr. Raymond Lee said they "feel more flexible than latex" and "were easy to put on and take off." The gloves "went on as smooth as butter, and I liked the inside feel of the glove," said Pamela Emard, RDH, and hygienist Malee Wong said, "The material was so comfortable to have on my hands."

Available in 5 sizes (XS, S, M, L, XL) in an ocean blue color, True Comfort blu gloves "fit wonderfully, and I have not had any breakage issues so far," said Wong, who admitted that "great fitting gloves are hard to find." Michele Byrd, RDH, noted, "The gloves fit me very well and were very comfortable," while Morrissey said, "I usually wear a size small glove, but these felt a little big on me." Although this glove fit hygienist Susan Afeltra's hand well, she said, "It seems a bit smaller in width than other gloves this size."

After "wearing gloves for so many years that my hands have become a little sensitive," Laurie Humphrey, RDH, was thrilled to report that "my hands didn't experience any fatigue" after using this glove. "I liked that my skin felt fine, and my hand didn't have to fight against the glove."

## takeaways

- New chloroprene polymer technology improves grip, tactile sensitivity, and comfort
- Available in 5 sizes (XS, S, M, L, XL) in an ocean blue color
- Fits like a second skin and features textured fingers, improved wet grip, and silky-smooth comfort
- Sold in boxes of 100 gloves with 10 boxes per case
- For every case sold, DASH donates to environmental causes

"The better grip and great tactile sensation allows me to grip instruments securely and reduces my hand strain."

—Nora Donatelli, DDS; Wheeling, IL

### Tactile Sensitivity & Grip

True Comfort blu gloves are textured to enhance grip, especially on wet surfaces, while improving tactile sensitivity, according to the manufacturer. "The grip texture and tactile sense were above average considering it's a thicker glove," noted Dr. Michael Hansen. "I liked the wet grip that they provided; this is a great feature for dentistry," shared Morrissey.

When asked to recommend improvements to the gloves, Wong suggested a bit more texture, and Byrd said she lost her grip a couple times when the gloves got wet.

### Durability & Packaging

Noting that typical "nitrile gloves tear easily when donning," Pope was "curious if chloroprene gloves did the same thing" and discovered that only 2 out of 600 True Comfort blu gloves tore during the DPS review period. As a result, she decided, "Chloroprene is a nice alternative to nitrile." Reporting "no breakage or leakage issues," Wong said the True Comfort blu gloves "feel thicker and more durable than latex gloves and have more flexibility than nitrile gloves." Afeltra agreed that "the glove is durable and doesn't tear easily," but Dr. Donatelli said the cuff occasionally tore off. "I didn't have any random tears while putting on the gloves like I do with competitive products," shared Dr. Hansen,

who called it "a good premium product."

The gloves are packaged in boxes of 100 with 10 boxes per case. For every case sold, DASH Medical will donate \$1.00 to organizations that clean and protect the environment. "I love that DASH makes a contribution to help fight ocean pollution, and I bet if other dental professionals knew this, they would buy this instead of their current brand," shared Morrissey.

### Overall Satisfaction

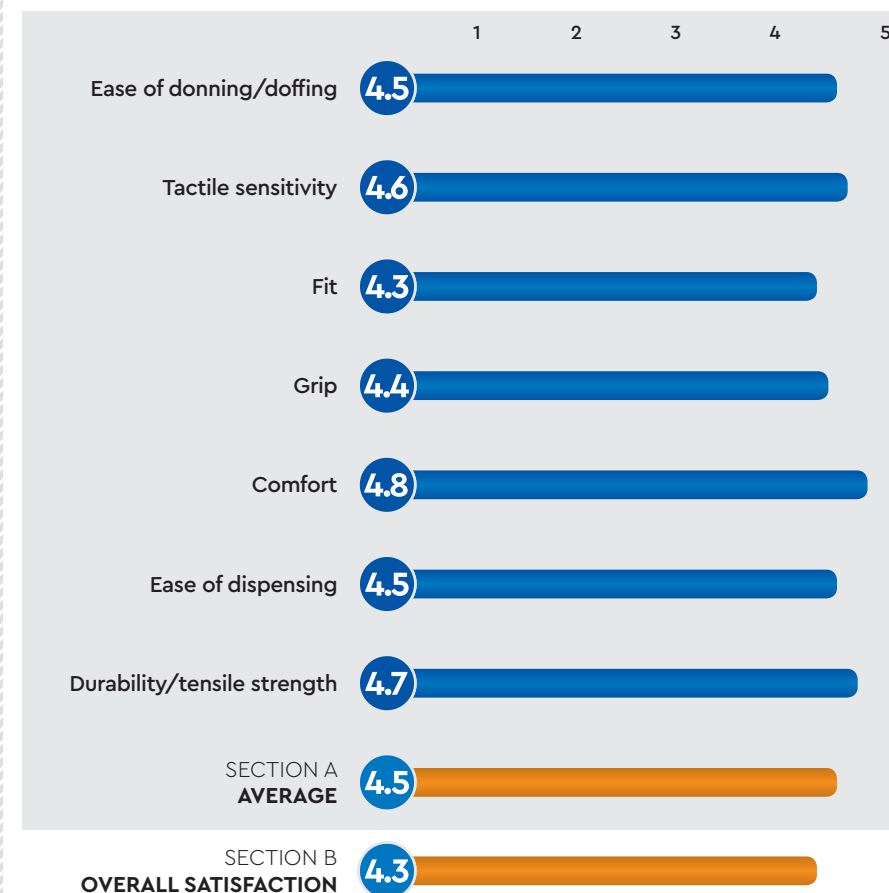
"True Comfort blu is a very nice glove indeed," reported Emard, who is now trying to convince her employer to switch to this brand. "I absolutely, unequivocally love this glove!"

### FOR MORE INFORMATION:

800.523.2055  
www.dashmedical.com

## PRODUCT REVIEW SNAPSHOT

CRITERIA BASED ON AVERAGE SCORE (OUT OF 5)



DASH MEDICAL  
TRUE COMFORT BLU

FINAL SCORE  
AVERAGE OF SECTIONS A AND B

4.4

